

APPLICATION OF SELECTED INTERIOR MATERIAL FOR MARTHA TILAAAR SALON'S DAY SPA RECEPTIONIST IN NEW NORMAL ERA

Stephanie Peribadi¹, Maitri Widya Mutiara² & Sri Fariyanti Pane³

¹Faculty of Art and Design, University Tarumanagara Jakarta
Email: stephanie.615190002@stu.untar.ac.id

²Faculty of Art and Design, University Tarumanagara Jakarta
Email: maitrim@fsrd.untar.ac.id

³Faculty of Art and Design, University Tarumanagara Jakarta
Email: yantipane@senirupaikj.ac.id

Enter : 10-04-2024, revision: 11-05-2023, accepted for publication : 15-08-2023

ABSTRACT

The Covid-19 pandemic is far from over, so the government is running a new normal era where people can carry out their daily activities but side by side with Covid 19. The prolonged pandemic has caused problems in various fields, one of which is the business sector. Activities that occur in public places, especially in day spa salons. Even though the existence of day spa salons has developed a lot, but with the new normal era as it is today, many day spa salons do not comply with health protocols and do not pay special attention to the use of proper materials in furniture that are used by many people so that it has the potential to increase the spread of the Covid-19 virus. . 19. 19. In the new normal era, day spa salons must comply with applicable health protocols. . Managers must ensure that all areas are clean and hygienic by carrying out regular cleanings to reduce the spread of viruses. This regulation presents new problems, especially in the aspect of interior design, one of which is the use of good and correct materials in day spa salon furniture. The purpose of this research is to design furniture, especially the reception and cashier areas that have a lot of contact with the media on the table surface so that the use of the right material is necessary to reduce the spread of the Covid-19 virus.

Keywords: Day spa, new normal, receptionist, salon

1. PREFACE

The Covid-19 pandemic is not completely over, but life goes on. Of course, in the midst of a pandemic that hasn't ended yet, most activities or activities are still required to run productively. Even during the Covid – 19 Pandemic, many people were required to carry out activities or activities outside the home. People are required to wear masks when leaving the house, maintain a minimum distance of one meter from other people, and always carry hand sanitizer.

The government also announced the PPKM (Restrictions on Community Activities) for the Java-Bali region with the aim of suppressing the spread of the Covid-19 virus which is increasing day by day accompanied by the emergence of a new Omicron XBB variant in Indonesia. The Director General of Regional Administration of the Ministry of Home Affairs (Kemendagri) Safrizal ZA explained that the PPKM would be extended and reminded the government in each region not to be complacent and alert to new variants of Covid, re-implementing health protocols in the community, increasing the use of the PeduliLindungi application and most importantly vaccine doses. third (booster). (Mufarida, 2022)

New normal is a change in behavior so you can carry out normal activities while still implementing health protocols to prevent the spread of the Covid-19 virus. With the stipulation of the new normal, people have started their activities outside the home while still adhering to health protocols, one of which is the third dose or booster vaccine which is still running today and has been regulated by the government to maintain their health. distance and avoid crowds. (Sakti, 2022)

If previously businesses could run freely, now all must comply with government protocols in fulfilling the new normal era. This has caused the managers of various businesses to think about the issue of preventing or reducing the spread of the virus, especially through shared furniture.

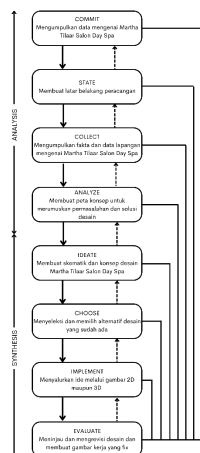
Therefore, in designing furniture in the new normal era, especially public areas that are used by many people, there is a greater potential for the spread of viruses, so there are many things that must be considered, especially good and correct materials during a pandemic. Managers must ensure that all areas are clean and hygienic by carrying out regular cleanings to reduce the spread of viruses. One of the fastest transmission of the virus is through the medium of surface objects. Therefore, it is used in recession areas that are safe from the development of the virus and is the subject of discussion in this study.

2. RESEARCH METHOD

The method to be used in this design is the method pioneered by Rosmary Kilmer. According to Rosmary Kilmer, the design process is divided into two stages, namely analysis and synthesis. In the analysis stage, problems are identified, studied, and dissected so as to produce an idea regarding the steps to solving the problem. While the synthesis stage manages the results of the analysis process to produce design solutions which are then implemented.

Figure 1

Design Method According to Rosmery Kilmer



In the design process, according to Rosmery Kilmer, there are several stages based on the design mindset chart and what the designer does at that stage. The stages are as follows:

- Commit, is the data collection stage to find out the problems in the design by searching and collecting some literature about Martha Tilaar Salon Day Spa.
- State, is the stage that defines the problem. At this stage the author makes the design background.
- Collect, is the stage of gathering facts and field data regarding Martha Tilaar Salon Day Spa. In addition, it also collects some literature data through internet media and books.
- Analyze, create a concept map to formulate problems and design solutions needed at Martha Tilaar Salon Day Spa.
- Ideate, is the stage of issuing ideas in the form of schematics and concepts. In this process, alternative designs, material and color concepts are created, as well as the concept of the designed furniture.

- f) Choose, is the stage of choosing the most appropriate and optimal alternative from existing ideas. Also at this stage, selecting ideas that have been collected at the previous stage through predetermined criteria.
- g) Implement, is the stage of channeling ideas through 2D or 3D images digitally or manually, power point presentations and animations.
- h) Evaluate, is the stage of reviewing the design that has been produced. Also at this stage, make revisions to the designs that have been reviewed and then make working drawings that have been fixed.

3. RESULT AND DISCUSSION

In designing interiors that are safe and comfortable in the new normal era, especially public buildings that are used by many people so that they have a greater potential for spreading viruses. Choosing the right material will play a very important role in slowing down or even preventing the spread of viruses indoors. One of the fastest and most frequent transmission of viruses is through the medium of surface objects. Because of this, several considerations emerged in the use of appropriate materials in the new normal era.

Using materials that have antibacterial properties, what is meant is a type of material with substances that can inhibit the growth and destroy viruses and bacteria but are not harmful to humans. One of them is copper.

Copper contains a natural antibacterial substance that can remove the virus coating attached to the surface of objects. On copper, the virus can disappear within 4 hours, compared to materials such as glass and stainless steel which take days. The use of copper is not recommended for load-bearing objects because copper is a soft metal, so the application of copper in the Martha Tilaar Salon Day Spa design is on parts that are light and frequently touched such as cupboard or drawer handles and also handles at the entrance/ lobby.

Figure 2

Application of Copper Material on the Reception Desk Drawer



In addition to using materials that have antibacterial properties, you need materials that are easy to clean and non-porous. Because in this new normal era, you have to ensure that all areas are clean and hygienic by cleaning them regularly, so cleanliness, especially the cleanliness of the furniture at Martha Tilaar Salon Day Spa, especially the reception desk and cashier table, is the main thing. furniture that is used most often and occurs frequently. direct contact when using it. Therefore, the top of the reception desk and cashier must receive special attention so that it is safe and comfortable when used by its users.

One of the materials that meet these requirements is a solid surface. This material is made from a mixture of acrylic resin modified with certain minerals and is often used as a substitute for granite on countertops (Kerdiati, 2021).

Apart from being easy to clean, the advantage of a solid surface is the many motifs that make it compatible with the design concept of Martha Tilaar Salon Day Spa.

Figure 3

Solid Surface Application on Martha Tilaar's Reception Desk



Another advantage of this material is that it is easy to clean with water or cleaning fluids and its texture is non-porous so it will not absorb liquids which can cause stains, namely it has a light weight but has strong resistance.

HPL (High Pressure Laminate), is also a finishing material that is easy to clean with water. HPL is also a material that is widely used for finishing coatings on furniture. HPL (High Pressure Laminate) is a sheet of wood or paper core. The core of these sheets consists of several layers of wood and paper fibers impregnated with phenolic resins and laminated under high pressure, resulting in a very dense, hard and textured sheet.

Another advantage of using HPL (High Pressure Laminate) is that apart from being easy to clean with a disinfectant in the new normal era, this finishing material is scratch resistant and strong, as well as stain and heat resistant.

In designing Martha Tilaar Salon Day Spa, HPL (High Pressure Laminate) was used on the left side of the reception desk and cashier table. The type of HPL (High Pressure Laminate) used is HPL TACO TH 152 – AA- Quateline Mocha.

Figure 4

Application of HPL at Martha Tilaar's Reception Desk



4. CONCLUSIONS AND RECOMMENDATIONS

The more rapid the various spas that exist around the world, Indonesia is also building a spa. One of them is Martha Tilaar Salon Day Spa. Even though there are more and more spas, with the new normal era like now, many spas do not comply with health protocols or pay special attention to the materials used to prevent transmission of the virus. Therefore, Martha Tilaar needs a new design concept so that she can carry out her activities normally but still comply with health protocols. In designing safe and comfortable interiors in the new normal era, especially public buildings that are used by many people so that they have a greater potential for the spread of viruses. Choosing the right material will play a very important role in slowing down or even preventing the spread of viruses indoors. One of the fastest and most frequent transmission of viruses is through the medium of surface objects. Because of this, several considerations arose in using the right material in the new normal era, namely using antibacterial materials such as copper which is applied to door or drawer handles, materials that are not porous and easy to clean such as solid surface and HPL (High Pressure Laminate). which is applied to the reception desk in the Design of Martha Tilaar Salon Day Spa.

Acknowledgement

I feel grateful to God Almighty so that this journal can be completed within the allotted time.

REFERENCE

- Annisa Medina, M., & Rostika, E. (2014). *Pemilihan Material pada Interior Brussels Spring Resto & Cafe Jalan Setiabudhi Bandung*.
- Della, R. (2021). Gunakan 4 Jenis Anti Microbial Surface Ini untuk Menjaga Ruangan Tetap Sehat! Kompasiana. <https://www.kompasiana.com/reqasya119742/5fd0d92ad541df4603136d12/gunakan-4-jenis-anti-microbial-surface-ini-untuk-menjaga-ruangan-tetap-sehat>
- Dewi, E. L. , I. F. H. , & S. M. Y. (2019). Perancangan Interior Architecture Salon Kecantikan. *Kreasi*, 4(2), 63–80.
- Dewi, E. L., Istanto, F. H., & Susan, M. Y. (2019). *PERANCANGAN INTERIOR ARCHITECTURE SALON KECANTIKAN DI BALI*.
- Elenab. (2022). *DAMPAK COVID 19 TERHADAP DESAIN FURNITUR AREA MAKAN STUDI KASUS: KAFE DI BOGOR*.
- Firmansyah, F. (2020). *Bersiap Hidup Dengan Adaptasi kebiasaan Baru*. Kemkes.Go. <https://kesmas.kemkes.go.id/konten/133/0/060814-bersiap-hidup-dengan-adaptasi-kebiasaan-baru>
- Hefiane, V. (2021). *Solid Surface; Material yang Punya Banyak Kelebihan*. Interior Design. Id. <https://interiordesign.id/solid-surface-material-yang-punya-banyak-kelebihan/>
- Mufarida, B. (2022). *Per 21 November 2022 PPKM Jawa-Bali Berakhir; Pemerintah: Akan Diperpanjang Artikel ini telah diterbitkan di halaman SINDOnews.com pada Senin, 21 November 2022 - 14:40 WIB oleh Binti Mufarida dengan judul "Per 21 November 2022 PPKM Jawa-Bali Berakhir; Pemerintah: Akan Diperpanjang*. Sindonews.Com. <https://nasional.sindonews.com/read/947357/15/per-21-november-2022-ppkm-jawa-bali-berakhir-pemerintah-akan-diperpanjang-1669014666>
- Wijaya, I. A., Pane, S. F., & Gani, A. C. (2021). Penerapan Protokol Kesehatan COVID-19 pada Desain Meja Customer Service. *Mezanin Jurnal Ilmiah Desain Interior*, 3.
- Kediati, N. (2021). *Material Interior Pada Masa Pandemi*. 3–6.
- Kilmer, R. (2014). *Designing Interior*. John Wiley&Sons, Inc.

- Melawati, R., Hanum, I., Sn, S., Ds, M., & Palupi, F. R. (2019). *PERANCANGAN TEA DAY SPA DI KOTA BANDUNG DENGAN PENDEKATAN RELAKSASI MELALUI INDRA PENGLIHATAN DAN PENCIUMAN*.
- Noorwatha, I. K. D. (2021). Desain Interior Bali Modern untuk Fasilitas Pariwisata Pasca Pandemi Covid-19. *Jurnal Bali Membangun Bali*, 2, 97–102.
- Rahyuda, I. Y. (2014). Klasifikasi Industri Pariwisata SPA di kawasan badung selatan. *ARIWISATA*.
- Sakti, R. E. (2022). *Pandemi Melandai, "New Normal" Dimulai*. Kompas.Id. <https://www.kompas.id/baca/riset/2022/08/30/pandemi-melandai-new-normal-dimulai>
- Sitorus, A. (2020). *New Normal di Tengah Pandemi Covid-19*. Kemenkeu. <https://www.djkn.kemenkeu.go.id/kpknsl-sidemampuan/baca-artikel/13169/New-Normal-di-Tengah-Pandemi-Covid-19.html>
- Thertina, M. R. (2020, March 18). *Berapa Lama Corona Bertahan di Tembaga, Besi, Plastik, dan Aerosol?*. <https://katadata.co.id/marthathertina/berita/5e9a4213f1e6a/berapa-lama-corona-bertahan-di-tembaga-besi-plastik-dan-aerosol>